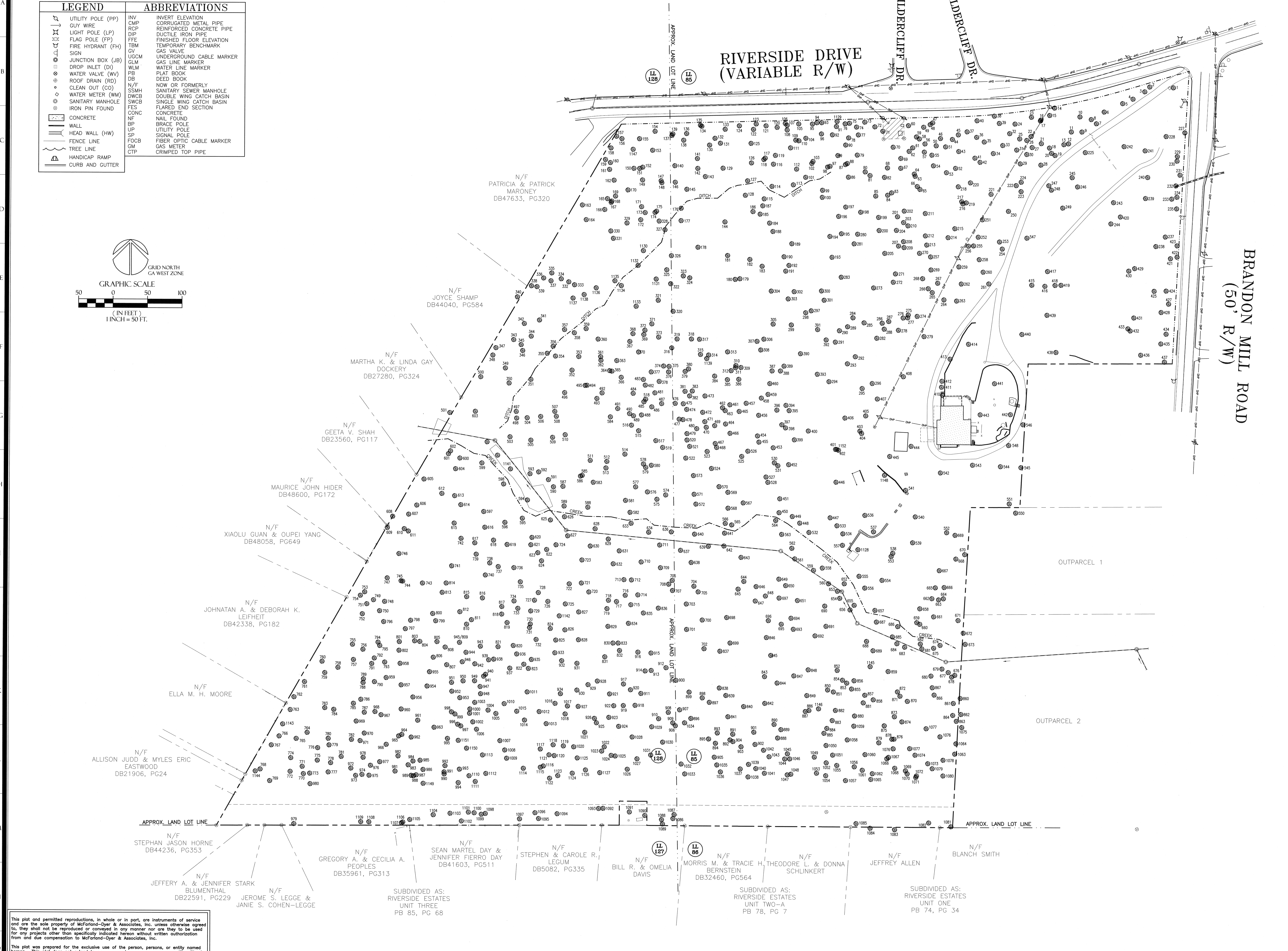
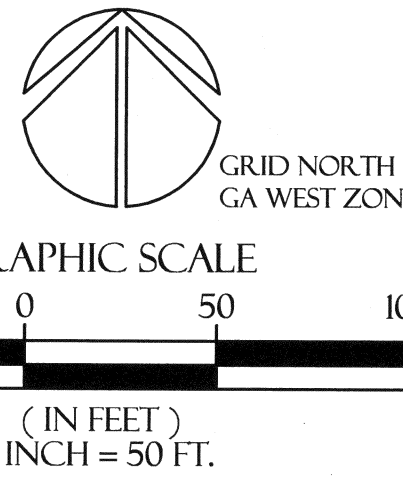


LEGEND	ABBREVIATIONS
	INV INVERT ELEVATION
	CMP CORRUGATED METAL PIPE
	RCP REINFORCED CONCRETE PIPE
	DIP DUCTILE IRON PIPE
	FFE FINISHED FLOOR ELEVATION
	TBM TEMPORARY BENCHMARK
	GV GAS VALVE
	UGCM UNDERGROUND CABLE MARKER
	GLM GAS LINE MARKER
	WLM WATER LINE MARKER
	PB PLAT BOOK
	DB DEED BOOK
	N/F NOW OR FORMERLY
	SSMH SANITARY SEWER MANHOLE
	DWCB DOUBLE WING CATCH BASIN
	SWCB SINGLE WING CATCH BASIN
	FES FLARED END SECTION
	CONC CONCRETE
	NF NAIL FOUND
	BP BRACE POLE
	UP UTILITY POLE
	SP SIGNAL POLE
	FOCB FIBER OPTIC CABLE MARKER
	GM GAS METER
	CTP CRIMPED TOP PIPE



This plot and permitted reproductions, in whole or in part, are instruments of service and are the sole property of McFarland-Dyer & Associates, Inc. unless otherwise agreed to, they shall not be reproduced or conveyed in any manner nor are they to be used for any projects other than specifically indicated herein without written authorization from and due compensation to McFarland-Dyer & Associates, Inc.

This plot was prepared for the exclusive use of the person, persons, or entity named herein. This plot does not extend to any unnamed person, persons, or entity without the express recertification of the surveyor naming such person, persons, or entity.

MDA
MCFARLAND-DYER & ASSOCIATES
1875 State Park Parkway
Waynesville, NC 27586
Phone: (770) 932-6688
Fax: (770) 932-6689

DATE	DESCRIPTION
04-30-2000	BOUNDARY AND TOPOGRAPHIC SURVEY

JOB NO. 04-003
CHECKED BY: C.W.M.
SURVEYED BY: C.W.M.

COPYRIGHT 2000
MCFARLAND-DYER & ASSOCIATES, INC.

CITY OF SANDY SPRINGS
LOST CORNERS TREE ASSESSMENT

11.85 & 118.57TH DISTRICT
FULTON COUNTY, GEORGIA

BOUNDARY & TOPOGRAPHIC SURVEY

SHEET 2 OF 3